

EBS | Innovation since 1977

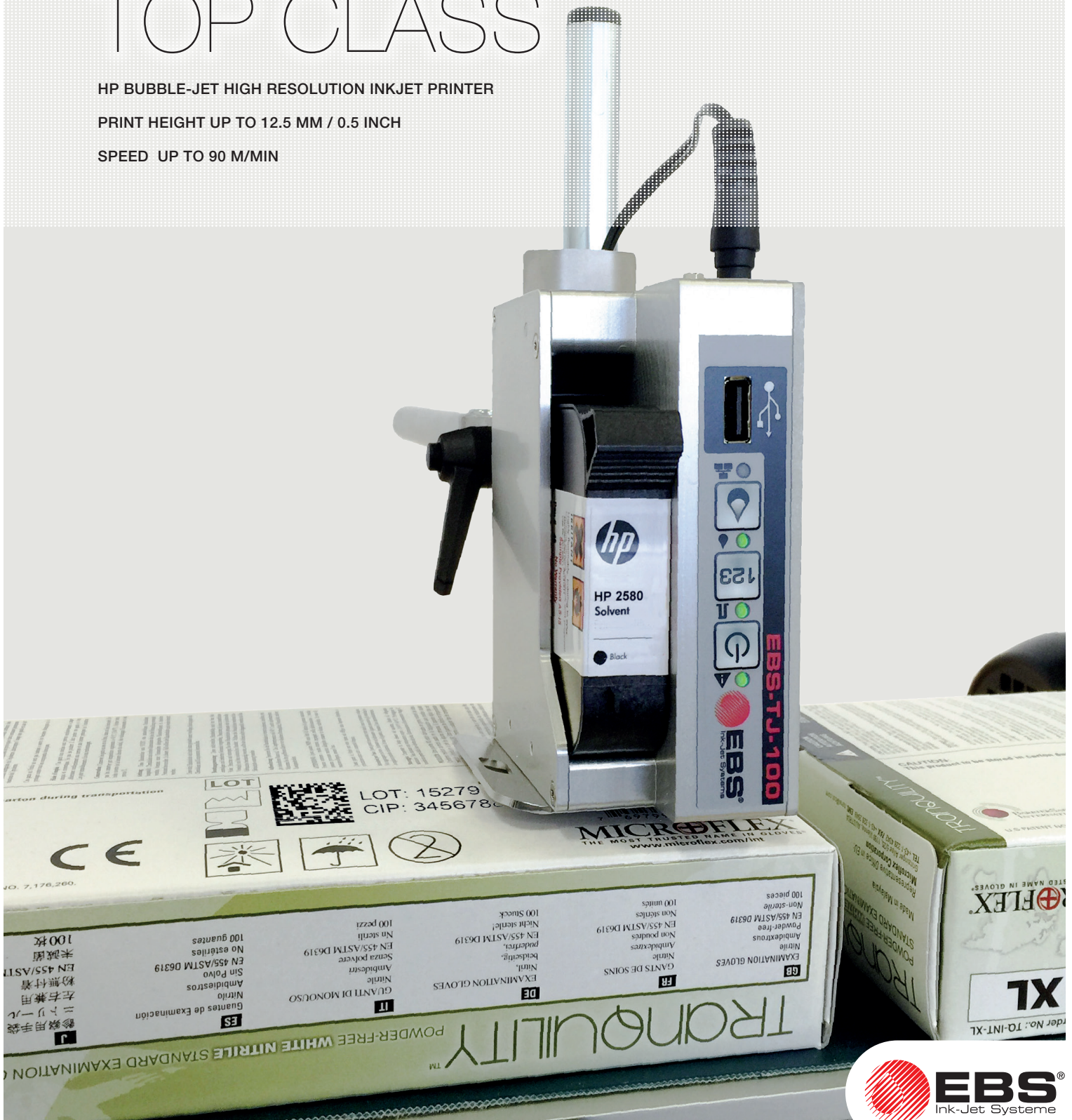
EBS-TJ-100

TOP CLASS

HP BUBBLE-JET HIGH RESOLUTION INKJET PRINTER

PRINT HEIGHT UP TO 12.5 MM / 0.5 INCH

SPEED UP TO 90 M/MIN



Exceptionally fast.

Exceptionally clean.

With the well-proven HP cartridge quality, the EBS-TJ-100 has an extremely compact style and is top value for money.

Print heads with black, water-based inks for porous surfaces like paper, cardboard and wood are available as well as high-contrast black pigmented inks for strongly absorbent surfaces together with solvent-based inks for smooth products (plastics, laminated cardboard, metal etc.).

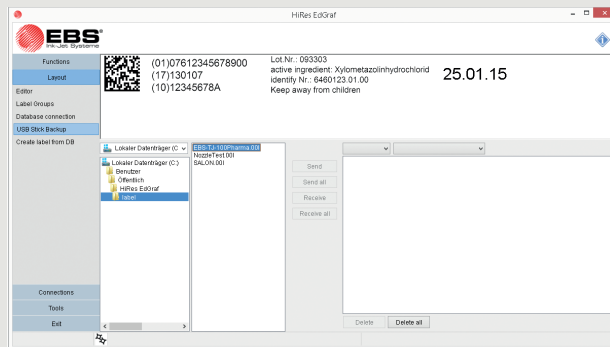
A smooth production process is ensured with the possibility of up to 16 hours shutdown time where the print head does not need sealing.

The solid aluminium structure with a length of only 123 mm excels with its patented click system which enables the cartridge to be simply clicked into place at the touch of a finger: weak and potentially fragile, plastic clamping mechanisms are a thing of the past.

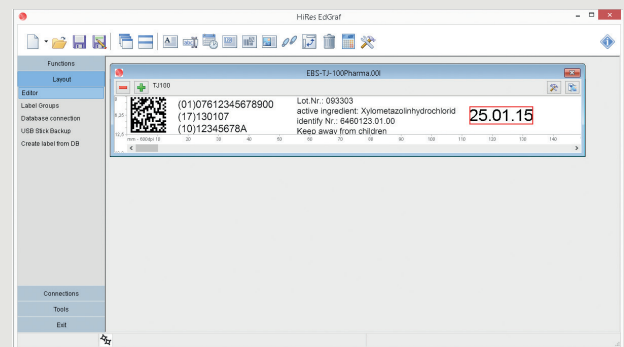
Millions of sophisticated, high-class prints can be created with the Windows-based software provided. Of course, external data can be transferred in real-time to a variable field.

The EBS-TJ-100 – fast, clean and economic.

Software



Data manager with preview function



Editor

Printing examples



LOT: 15279
CIP: 345678876925448



EBS Ink Jet Systeme GmbH
Alte Ziegelei 19-25
51588 Nümbrecht
www.ebs-inkjet.de

Specifications

Technical details

EBS TJ-100 Variations	Mini	Midi	Maxi
Max speed at 300 dpi	30 m/min	30 m/min	90 m/min
Print height	0.8 - 12.5 mm (0.03 - 0.5 inch)		
Max. text length	1000 mm	2000 mm	
Memory	9 Message blocks		
Text field	⊙	⊙	⊙
Counter (up / down)			⊙
Date / Time		⊙	⊙
Date Offset			⊙
Variable field			⊙
Logos	⊙	⊙	⊙
1D Barcodes			⊙
2D Barcodes			⊙
USB Stick Data transfer		⊙	
Ethernet		⊙	
Web interface		⊙	
RS-232		⊙	
Product Sensor	Internal built-in photocell		
External Sensor Connection		⊙	
Encoder Connection		⊙	
Input/Output	2 Input channels / 4 Output channels		
Ink level control		per LED	
Spray cleaning		⊙	
Heatable		⊙	
Print ready indicator		per LED	
Text choice		via keystroke	
Power supply	230V/12V		
Optional accessories	Shaft encoder, flexible assembly holder, plug for optional interface		

EBS | Innovation since 1977



Plant Nümbrecht - Germany

EBS | 40 Years of Competence and Innovation

Since 1977, EBS GmbH Germany has been a leader in industrial coding equipment. Our early development and pioneering innovations in ink-jet technology are still being used world wide.

Today EBS has become an international producer and operates a family owned multi-national business. We run branch offices and plants in Europe, USA and China and co-operate with numerous partner companies world wide.

More than 220 people develop and produce the range of EBS products in Germany and Poland. We continue to set global standards for quality, innovation, technological leadership and service.

Our high performance products can be found in more than 60 countries, with more than 160 distributors, dealers and OEM's.

We would like to welcome you as our new customer.

www.ebs-inkjet.com

Your Dealer

Subject to technical changes.



PRODUCTION & DEVELOPMENT

HEADQUARTERS GERMANY

EBS Ink Jet Systeme GmbH
Alte Ziegelei 19-25
51588 Nümbrecht-Elsenroth
Deutschland
Tel: 0 22 93 / 93 9-0
Fax: 0 22 93 / 93 9-3
E-Mail: mail@ebs-inkjet.de
www.ebs-inkjet.de

POLAND

EBS Ink-Jet Systems Poland Sp.z o.o.
ul. Tarnogajska 13
50-512 Wroclaw (Breslau)
Polen
Tel: (+48) 71 36 70 411
Fax: (+48) 71 37 33 269
E-Mail: office@ebs-inkjet.pl
www.ebs-inkjet.pl

SALES, LOGISTICS & TECHNICAL SUPPORT

USA

EBS Ink-Jet Systems USA, Inc.
1840 Industrial Drive - Suite 200
Libertyville, IL 60048
USA
Tel: (001) 847 996 0739
Fax: (001) 847 996 0843
E-Mail: america@ebs-inkjet.com
www.ebs-inkjet-usa.com

CHINA

EBS Ink-Jet Systems Co., Ltd.
Middle Unit, Floor 5, Building B6,
China Merchants Guangming
Tech. Park, No3009, Guanguang Rd,
Guangming New Dist.,
518132 Shenzhen China
Tel:(+86) 755 882 842 59
E-Mail: sales@ebs-china.com
www.ebs-inkjet-china.com

